

Qualification Type: IQ

Section # Test Case # Title

7.1. 1 Verification of ExcelSafe Installation

Purpose

To verify proper installation of ExcelSafe.

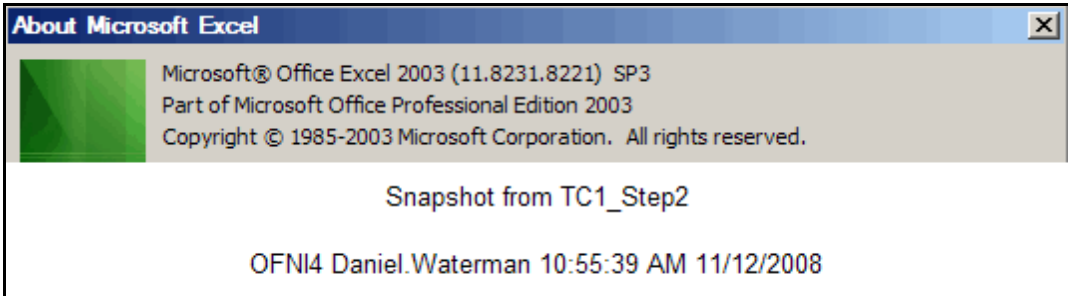
Acceptance Criteria

The test case will demonstrate that:
 All documentation required to operate and maintain the system is present.
 Microsoft Excel, Version 2000 or higher is installed.
 The operating system required for use is MS Windows 2000, MS Windows XP or MS Vista.
 All required ExcelSafe files are loaded.
 Microsoft Access, Version 2000 or higher is installed.
 Microsoft DAO, Version 3.51 or higher is installed.
 The Example Validation spreadsheet is properly loaded in ExcelSafe.
 The Example Validation spreadsheet can use local or networked printers.
 Will not open from outside ExcelSafe.
 Opens correctly from inside ExcelSafe.

Test Case: 1. Verification of ExcelSafe Installation

Step #	Procedure	Expected Result	Actual Result	P / F	Init.	Date
All documentation required to operate and maintain the system is present.						
1	Verify that all documentation required to operate and maintain the system is present.	All documentation required to operate and maintain the system is present.	All documentation required to operate and maintain the system is present. Document Title: Use of ExcelSafe; Doc ID: OS-V-100 Revision: 0	Pass	DW	12-Nov-08
Microsoft Excel, Version 2000 or higher is installed.						
2	Open Microsoft Excel. Under the Help item on the menu, select About Microsoft Excel.... Verify the version of Microsoft Excel. Close Microsoft Excel.	Microsoft Excel is Version 2000 or higher.	Microsoft Excel is Version 2003. (11.8231.8221, SP3)	Pass	DW	12-Nov-08

Snapshot from test step #2



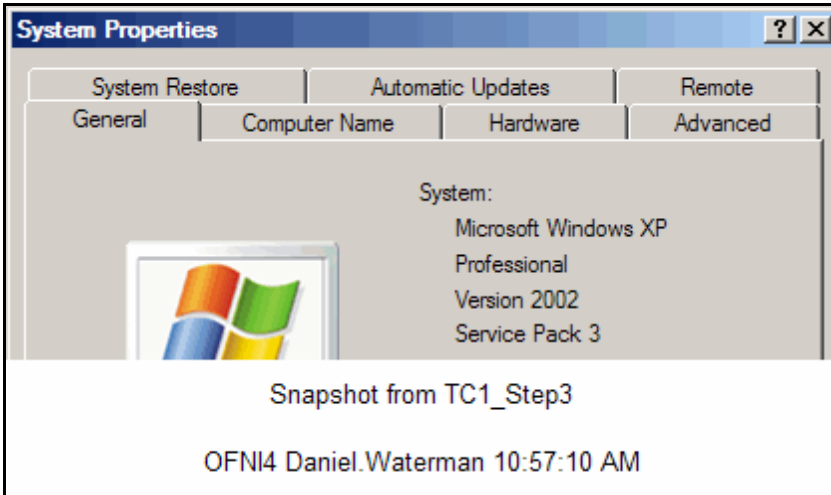
The operating system installed for use is either MS Windows 2000 or MS Windows XP or MS Vista.

3	On the desktop, right click the MY Computer icon and select Properties from the menu. Verify the version of Microsoft Windows that is currently running. Close the Windows property screen.	The version of Microsoft Windows currently running is either Windows 2000, Windows XP or MS Vista.	The version of Microsoft Windows currently running is Windows XP.	Pass	DW	12-Nov-08
---	---	--	---	------	----	-----------

Test Case: 1. Verification of ExcelSafe Installation

Step #	Procedure	Expected Result	Actual Result	P / F	Init.	Date
--------	-----------	-----------------	---------------	-------	-------	------

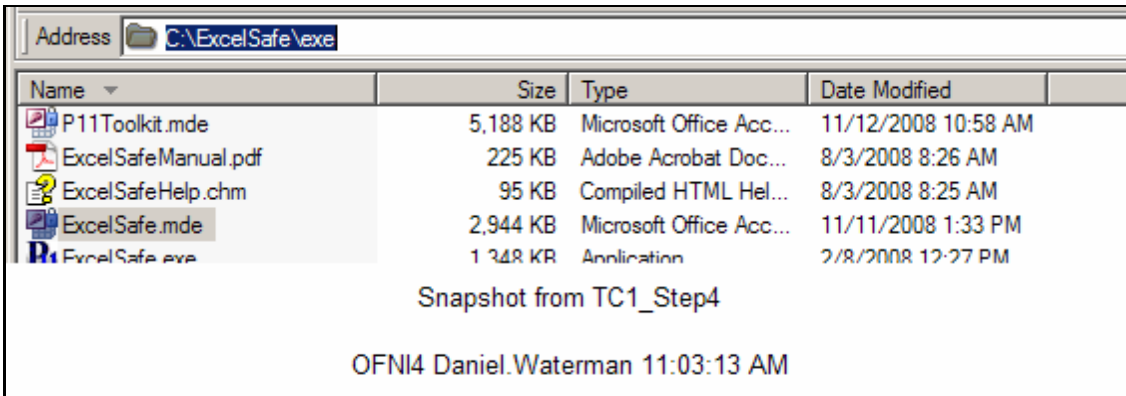
Snapshot from test step #3



All required ExcelSafe files are loaded.

4	Record file location for ExcelSafe.mde program.	File location for ExcelSafe.mde program recorded.	File location for ExcelSafe.mde program recorded. File Location: C:\ExcelSafe\exe\ExcelSafe.mde	Pass	DW	12-Nov-08
---	---	---	---	------	----	-----------

Snapshot from test step #4



5	Record file location for ESData.tdb.	File location for ESData.tdb recorded.	File location for ESData.tdb recorded. File Location: C:\ExcelSafe\exe\ESData.tdb	Pass	DW	12-Nov-08
---	--------------------------------------	--	---	------	----	-----------